

ONE  
BISHOPSGATE  
PLAZA



ONE  
BISHOPSGATE  
PLAZA



“Design has to be about the  
invention of things”

George Yabu

# CONTENTS

- 
- 8-21 **One Bishopsgate Plaza**
- 22-47 **The Sky Residences**
- 48-69 **A Lifestyle of Convenience**
- 70-91 **The City at Your Feet**
- 92-99 **A World-Class Team**
-



# ONE BISHOPSGATE PLAZA

---

## Luxury Private Residences Serviced by Europe's First Pan Pacific Hotel

---

One Bishopsgate Plaza is for people whose lives never slow down. For whom there can be no compromise on quality – quality of time, quality of service and quality of life.

One Bishopsgate Plaza offers no compromise. A new landmark tower located in the true heart of the City, on a major transport hub, with access to the offices of global institutions right on your doorstep.

But what truly sets the apartments at One Bishopsgate Plaza apart is their situation: arranged across 20 levels above a new Pan Pacific hotel – the first in Europe. Offering access to hotel services below and private amenities above, seamlessly integrating into your busy daily life.

World-class apartments above a world-class hotel in a world-class city location. Quite simply, a life without compromise.





The main entrance and taxi drop off located on Houndsditch



## Your Sanctuary in the Sky

---

The Sky Residences at One Bishopsgate Plaza represent the epitome of contemporary luxury living.

The unique location with its imposing views is only the beginning. Each day opens up new and exciting possibilities – from the convenience of the hotel's services to the sense of comfort, privacy and security that can only be created within your own home.







## The City on Your Doorstep

---

It is a rare opportunity to live in the heart of the City of London. One Bishopsgate Plaza gives you access to this opportunity and the powerful benefits it brings.

London is a global financial centre and the Square Mile is at its historic heart, populated by FTSE100 businesses and the headquarters of global multinationals – many within walking distance of the development.

One Bishopsgate Plaza sits on a transport hub that provides quick access to all points of London, including the West End, Canary Wharf, London City Airport, Heathrow and Eurostar.

The introduction of the new Elizabeth Line Crossrail services from Liverpool Street Station in 2022 will cut journey times and bring London – and the world ever closer.



## The Beauty of Time

---

We understand that time is your most valuable commodity. And that is why life at One Bishopsgate Plaza has been designed to help you maximise it. From an unparalleled location, attentive concierge services and access to hotel amenities, to a range of à la carte services – so that time is created for what really matters.

That could be more time to enjoy the simple things in life, spending time with friends and loved ones, or making the most of some time to yourself. A contemplative coffee, a reviving swim, a chance to read another chapter of a book in the library. Or more time to enjoy the journey because the destination is that much closer.

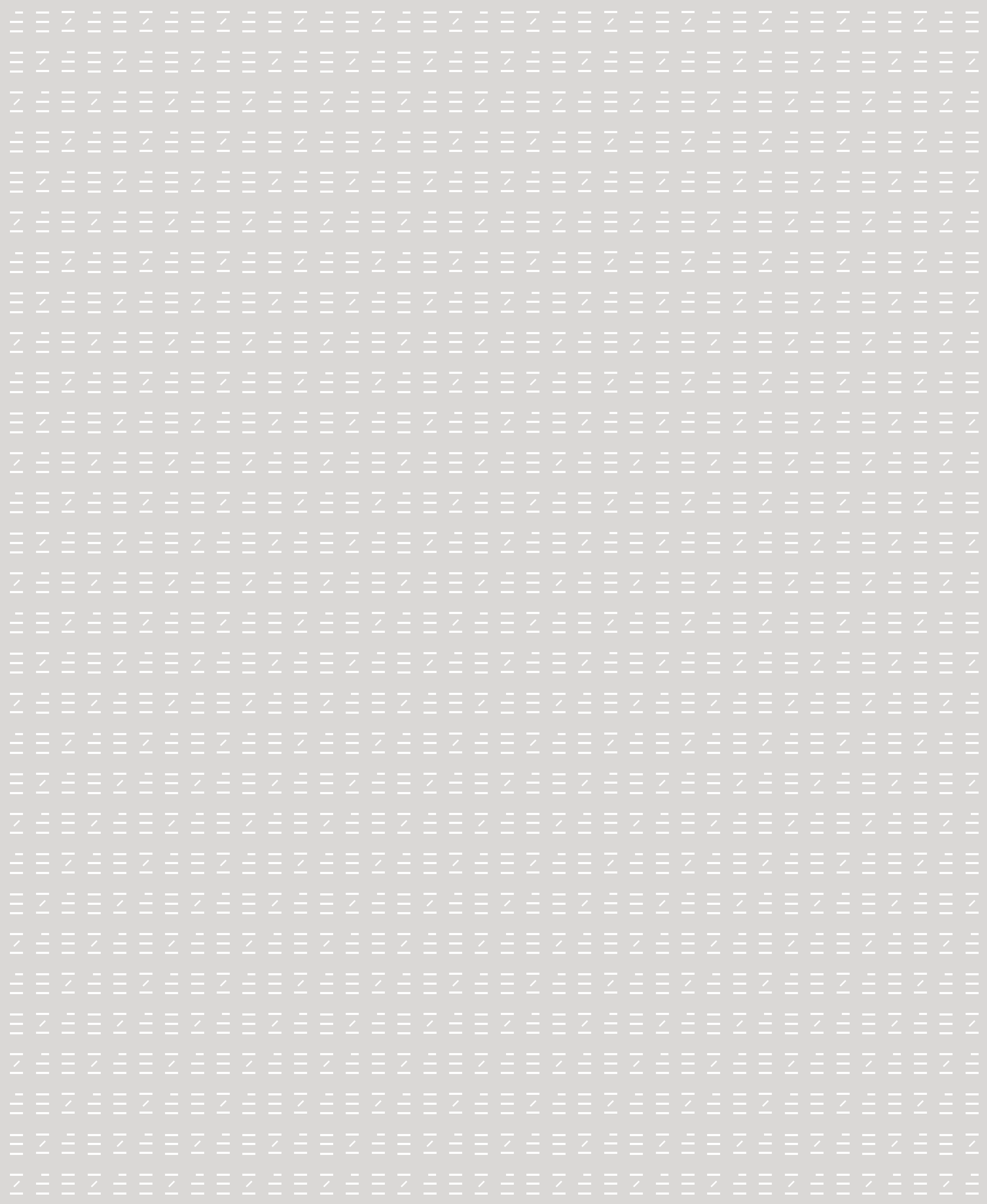


## A Home with Services on Demand

—

There is no substitute for services that are genuinely on demand – services that are designed to deliver everything you want, easily and quickly, every time.

From a light meal after a long flight to the perfect Martini after a busy day, the services of the Pan Pacific London are available night and day. A limousine to the airport or a mohair suit pressed for an early morning meeting – nothing seems impossible at One Bishopsgate Plaza.



# THE SKY RESIDENCES

—

## Where the Living is Exceptional

—

Life at One Bishopsgate Plaza is all about exceptional service and design, from the concierge who welcomes every resident by name, to the private lifts that go straight to the Sky Residences situated from level 21 to 41.

One Bishopsgate Plaza brings the elegance and sophistication of Mayfair to the City. Interiors are defined by a polished simplicity, with form and function playing equal roles. These are homes designed with the needs and desires of discerning individuals in mind.

When residents return after time away, they can choose from a menu of à la carte services such as apartment cleaning, linen services and flower delivery.



Landmark views await you in the Sky Residences



Open-plan living, dining and kitchen area in one of the three-bedroom apartments



Dual aspect dining areas in selected two- and three-bedroom apartments afford panoramic views of the City

## Unrivalled views across London

—

Gazing out of the full-height windows is like being within your own private gallery, with London's most iconic landmarks as its exhibits.

The interiors complement the views without distracting from them. Soft neutral tones and a restrained, natural palette are a comfortable counterpoint to the glass and steel towers outside.







Two-bedroom apartment open plan living and dining area



One-bedroom apartment open plan living and dining area





Light filled bedrooms with a refined elegance

## Sophisticated Comfort of Home

Bedrooms have been designed to combine the luxury of a hotel suite with the reassuring comfort of home.

Master bedrooms have been conceived as a suite with lighting control, dressing areas and en suite bathrooms.



Wake up to views across the City of London



One and two-bedroom apartments feature Volakas marble surfaces



## A Calming Sanctuary with Luxury Finishes

Bathrooms are of a calibre found in the best hotels, with neutral tones and luxury finishes chosen to create a calm sanctuary.

One-bedroom apartments have a shower with a frameless smoked-glass enclosure. In addition to the master bathroom, two-bedroom apartments have a family bathroom with a combined shower and bath set within a marble enclosure.

Three-bedroom apartments have generous master bathrooms, with a bath and separate shower enclosure, large marble enclosed basin and vanity and Volakas marble surround.



One-bedroom apartment bathroom / two-bedroom en suite



Two and three bedroom apartments four-piece master ensuite bathroom



# A LIFESTYLE OF CONVENIENCE

—

## Exclusively Yours at One Bishopsgate Plaza

—

What does it really mean to live with access to a luxury hotel? At One Bishopsgate Plaza, it means access to Pan Pacific London's amenities and services, from the bars and restaurant with private dining to the gymnasium, wellness area and swimming pool in a vantage point overlooking Bishopsgate.

It provides the ultimate convenience of bringing all spheres of life under one roof. You can work without leaving the comfort of your home and if you need more formal surroundings, there is a business centre and meeting rooms. When family, friends or colleagues visit, you can play host in the private residents' club, leaving your own personal space uncompromised.

And in addition, a wide range of à la carte services – including in-home services and even a butler – are available on a pay as you go basis to meet residents' exacting personal needs.



The light-filled swimming pool within the leisure suite on the fourth level is the perfect place to relax and reflect on life in the City





High tech gymnasium

## World-class Wellness

Focus on your mind and body at the world-class wellbeing floor dedicated exclusively to holistic health, featuring the most technologically advanced facilities showcased by any hotel gym in the UK.

A truly personalised approach to wellbeing is practised, with everything from treatments to customised exercise, mindfulness studios, nutritional bars and an expert team of health professionals available to help you achieve your specific goals.

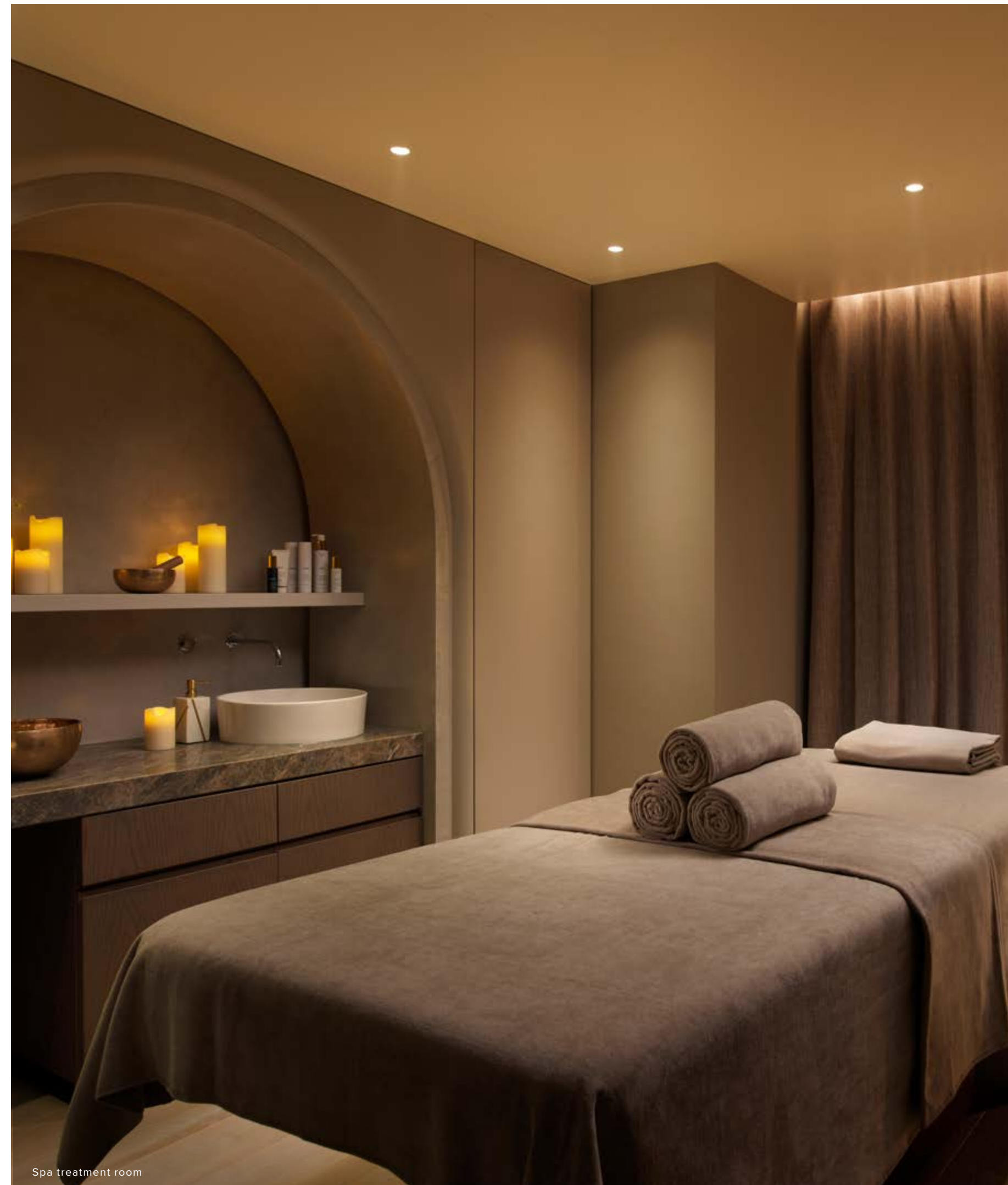
The cutting-edge gym boasts high-performance equipment – including the D-Wall system, the first of its kind in any hotel across the UK – to offer a truly interactive space.

Two indulgent treatment rooms are designed to de-stress both body and mind, together with sauna and steam rooms for soothing, cleansing and finding your balance.

Treatment menus combine the best of Eastern and Western techniques and remedies, and the expert team tailor everything to individual requirements.

The Mindfulness Studio provides a dedicated space for reflection and relaxation. With a focus on self-care, you can enjoy yoga, meditation, Pilates, barre and gong therapy.

A complete wellbeing programme is available in guestrooms for those who don't want to leave the comfort of their well-appointed accommodation. From spa services to self-care experiences and high-intensity workouts, the team can provide everything required for focusing on wellness in private.



Spa treatment room



Residents' private library and lounge bar



Views across the City of London from the residents' private lounge bar



Residents' private lounge bar

## Exclusive Residents' Lounge, Concierge and Sky Lobby

Level 20 marks the separation between hotel and the Sky Residences. The residents' lifts take you to a private lobby where you will instantly feel at home. This calm, welcoming space has the design, atmosphere and exclusivity of a private club. Here you can take time to relax, enjoy refreshments or meet friends and business associates.

On Level 33, there is further amenity space for residents, with an informal club room where you can relax in front of the big screen, play pool or sit out on the terrace on Level 34 and enjoy expansive views across London. There are few better places to wind down on warmer evenings.

**Lounge Bar**  
**Reception/Concierge**  
**Library**  
**Club Room**  
**Private Meeting Rooms**  
**Sky Terrace**



Fresh flower service

## Personal À La Carte Services

---

A home with bespoke services on demand is one where you can enjoy ultimate ease and convenience. At One Bishopsgate Plaza, a menu of additional services have been curated for residents – personalised services delivered direct to your door.

Perhaps you would like someone to deliver fresh flowers? Secure that elusive table at the best new restaurants, book transportation or arrange for the paper to be delivered to your door each morning.

You might want a housekeeper to take care of your laundry or a butler to unpack your luggage or arrange a last-minute meal.

You would expect these services in a world-class hotel. And at One Bishopsgate Plaza you have access to these services in your very own home.

### Services include:

- Flower Service
- Babysitting
- Grocery Delivery/Fridge Stocking
- Apartment Cleaning
- Room Service
- Butler Service
- Daily Newspaper Delivery
- Wellness Treatments
- Personal Swimming Trainer
- Meeting Room/ Event Hire





The impressive arrival and grand staircase at the Pan Pacific Hotel London







Straits Kitchen all day dining restaurant

## Unique Dining Experiences

Embracing a respectful approach to cooking based on heritage recipes, the menu in Straits Kitchen showcases a melting pot of cuisines from Singapore's many cultures. Serving breakfast, lunch and dinner, the restaurant features floor-to-ceiling windows overlooking the Plaza, while two private dining rooms enable guests to enjoy a selection of set menus to suit all tastes and occasions.

Sitting alongside Straits Kitchen are Newton and Katong, two intimate private dining rooms accommodating all tastes and occasions, from working breakfasts to lunch hour meetings and celebratory dinners.

Finally Ginger Lily provides the excitement of Singaporean bar culture in London. This lively space boasts an extensive champagne list and carefully-curated cocktails.



Newton private dining room



Enjoy an extensive champagne list and carefully-curated cocktails at Ginger Lily

# THE CITY AT YOUR FEET

---

## A Global Financial Hub and the Centre of Arts and Entertainment

---

London's famous Square Mile is the place to do business, a hub at the centre of the time zones. One Bishopsgate Plaza uniquely places residents in the heart of this dynamic global location.

The City is becoming a destination in its own right with an ever-growing number of restaurant openings, burgeoning private clubs and luxury retail outlets.

But what it remains is a rarefied place, home to only a chosen few.



## The City of London

### Shopping

- 1 Royal Exchange
- 2 Leadenhall Market
- 3 One New Change
- 4 Devonshire Row and the Plaza
- 5 Old Spitalfields Market

### Cocktail Bars

- 1 Neo Barbican
- 2 The Alchemist
- 3 Vertigo 42
- 4 The Anthologist
- 5 Mayor of Scaredy Cat Town
- 6 Proud Cabaret City
- 7 Demon, Wise & Partners
- 8 Oriole Bar

### Members' Clubs

- 1 The Ned
- 2 Shoreditch House
- 3 The Curtain
- 4 Eight

### Restaurants

- 1 The Mercer
- 2 Forge
- 3 SUSHISAMBA
- 4 Duck and Waffle
- 5 1 Lombard Street
- 6 Angler
- 7 Bread Street Kitchen
- 8 Darwin Brasserie
- 9 La Dame de Pic
- 10 Mei Ume
- 11 The Ivy City Garden
- 12 Eataly

### Art & Culture

- 1 Tate Modern
- 2 Barbican Centre
- 3 Museum of London
- 4 Guildhall Art Gallery
- 5 London Mithraeum Bloomberg SPACE

### Education

- 1 Guildhall School of Music & Drama
- 2 Cass Business School
- 3 London Metropolitan University
- 4 City of London School for Girls

### Businesses

- 1 Deutsche Bank
- 2 ING
- 3 BNP Paribas
- 4 Cazenove
- 5 Bank of England
- 6 Lloyds Banking Group
- 7 Bank of China
- 8 Swiss Re
- 9 Nomura
- 10 Mitsubishi UFJ Financial Group
- 11 Bloomberg
- 12 UBS
- 13 London Stock Exchange
- 14 Goldman Sachs
- 15 Bank of America
- 16 Linklaters LLP
- 17 Allianz Global Investors
- 18 Ashurst
- 19 AXA Investment Managers
- 20 DLA Piper UK
- 21 Henderson Global Investors
- 22 QBE
- 23 SAS
- 24 TP ICASP

### From Liverpool Street Station

Two minutes walk from One Bishopsgate Plaza

### ✈ Airport & Eurostar

- 11 min Eurostar
- 27 min London City
- 35 min Heathrow T1
- 47 min Stansted
- 50 min Gatwick

### ✂ Crossrail from 2022

- 6 min Canary Wharf
- 7 min Bond Street
- 10 min Paddington
- 33 min Heathrow Central

### 🚇 London Underground

- 11 min King's Cross St Pancras
- 11 min Oxford Circus
- 13 min Bond Street
- 13 min London Bridge
- 13 min Farringdon



Devonshire Row and the new public plaza





## A Global City for Commerce

---

London has long been the world's most attractive financial centre – home to the world's oldest stock exchange and more banks than any other global hub.

Many banks and insurance companies have their HQs here, as do some of the world's biggest law firms, including those in the 'magic circle'.

### Within walking distance

- Salesforce Tower
- The Gherkin
- The Walkie Talkie
- Tower 42
- The Leadenhall Building
- The Scalpel
- 110 Bishopsgate
- 30 St Mary Axe
- 20 Fenchurch Street
- 25 Old Broad Street
- 122 Leadenhall Street
- 52 Lime Street





## An International Seat of Learning

The prestige of London's universities, colleges and schools attract many overseas families seeking a British education for their children. Imperial and LSE are both within easy reach of One Bishopsgate Plaza and rank among the world's best universities. Prestigious King's College London on The Strand is also nearby.

There are many first class schools that see fierce competition for places. The Square Mile is well-placed to access them, including City of London School and St Paul's School.

And when education is complete, One Bishopsgate Plaza provides the perfect base for accessing high-calibre opportunities in the City, West End and Canary Wharf.

### From your doorstep via public transport

- Queen Mary's University of London - 15 min
- University of the Arts London - 16 min
- London School of Economics - 20 min
- Kings College London - 21 min
- University College London - 22 min
- City, University of London - 22 min
- University of Westminster - 25 min
- SAOS, University of London - 26 min
- London South Bank University - 26 min
- Imperial College London - 37 min

Only fastest time shown  
Source: Citymapper





London City Airport is only 27 minutes away

## Perfectly Placed for Intercity and International Travel

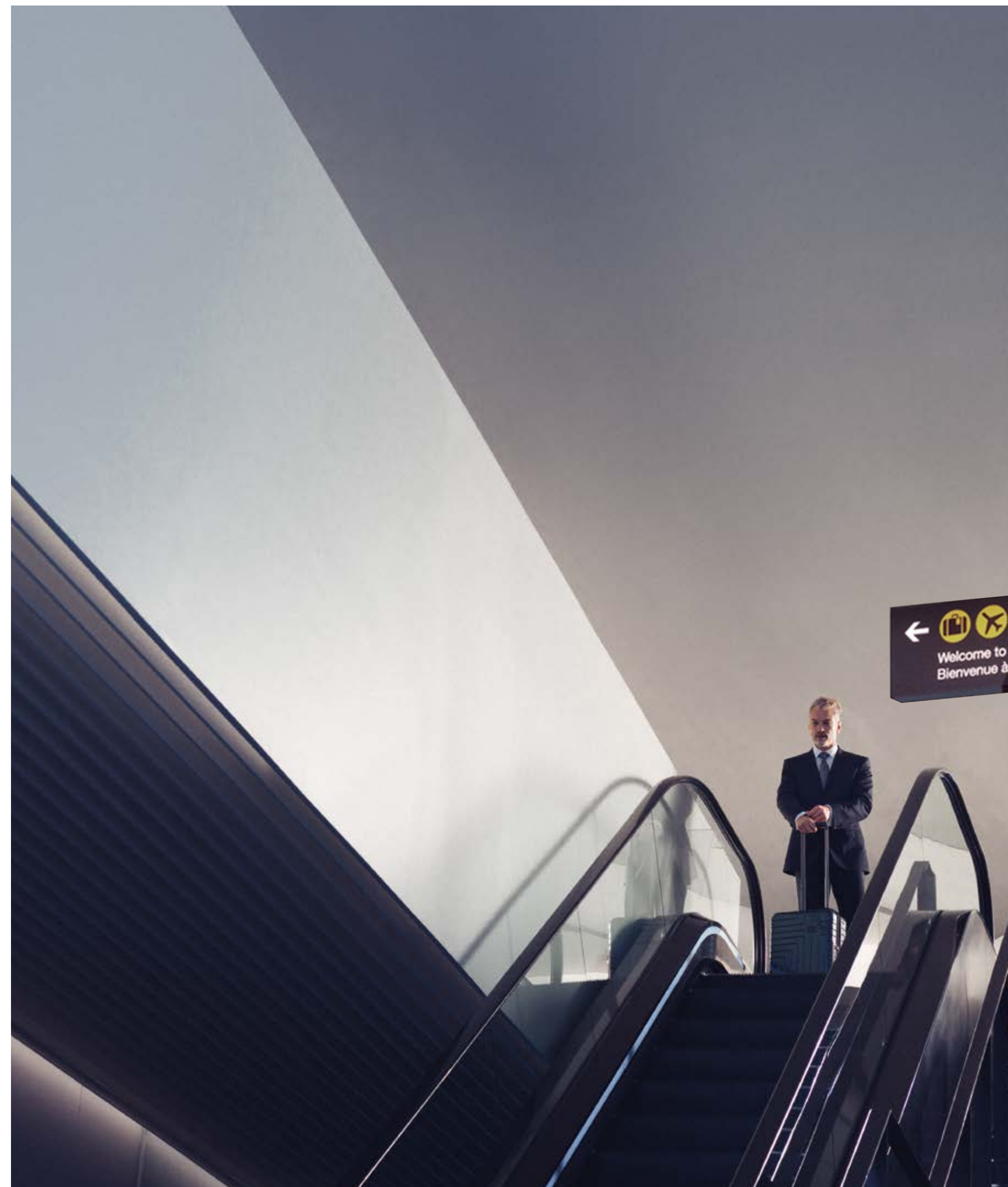
The City of London has the rare luxury of an international airport within seven miles of its financial centre.

Heathrow, Gatwick, Stansted and Luton airports are also easily accessible from central London – and via Crossrail services from Liverpool Street station from 2022 – and Eurostar services from St Pancras International provide convenient overland access to Europe.

**Via Liverpool Street Station two minute walk from One Bishopsgate Plaza**

- Eurostar - 11 min**
- London City Airport - 27 min**
- Heathrow T1 - 35 min**
- Stansted - 47 min**
- Gatwick - 50 min**

Only fastest time shown  
Source: Citymapper





Luxury shopping in the City of London

## A Retail Destination

Whilst One Bishopsgate Plaza provides quick direct access to Bond Street and the West End, residents no longer need to venture outside of the Square Mile.

The Royal Exchange, originally built in the 16th century as the centre of commerce for the City of London, today houses a range of restaurants, cafés and luxury boutiques. Its central courtyard has an array of global brands including Hermès and Tiffany & Co.

For a more contemporary environment, the Jean Nouvel designed One New Change, near St Paul's Cathedral, is the area's largest shopping destination, home to a range of retail outlets and restaurants open every day of the week.

**A selection of luxury retailers situated at The Royal Exchange seven minutes walk from One Bishopsgate Plaza -**

- Aspinal of London
- Boodles
- Bremont
- Fortnum & Mason
- Hermès
- Ladurée
- Montblanc
- Omega
- Smythson
- Tiffany & Co



The Royal Exchange, Bank



Eataly, Italian restaurants and marketplace

## Dining in the Height of Style

SUSHISAMBA and Duck & Waffle, both located next door to One Bishopsgate Plaza, are on the menu of lively restaurants that make the City a must-go dining district.

Many of them, set high in towers, come with panoramic views that stretch beyond London.

### Within walking distance

- Eataly
- Duck & Waffle
- SUSHISAMBA City
- The Ivy City Garden
- Coq d'Argent
- Yauatcha City
- Jose Pizarro Broadgate
- Cinnamon Kitchen City
- City Social
- Galvin La Chapelle
- The Mercer
- Angler
- Darwin Brasserie
- 1 Lombard Street
- The Ned
- Mei Ume
- Le Dame de Pic



40th floor restaurant, Sushi Samba



The Ned, a social and dining destination within easy reach

## A Sense of Belonging

—

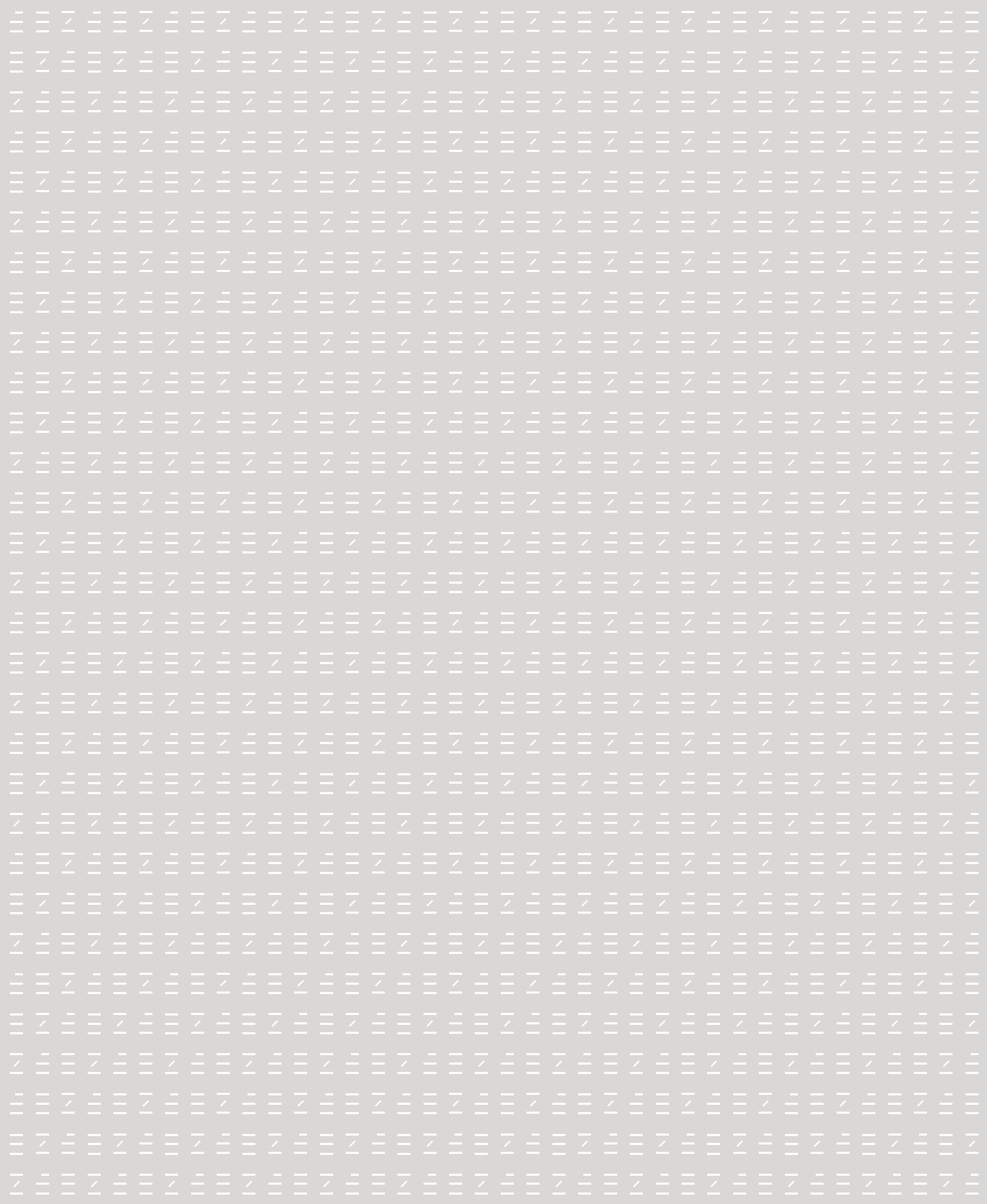
The City is carving a reputation for a new generation of chic members' clubs – including The Ned.

With opulent interiors and first class facilities, they come with an aura of exclusivity that City workers enjoy, and a lively atmosphere.

The City has a social scene that has exploded in recent years, with ever-more elaborate offerings in increasingly inventive settings from the jungle-themed Oriole Bar to the Indian-inspired Anise.







# A WORLD- CLASS TEAM

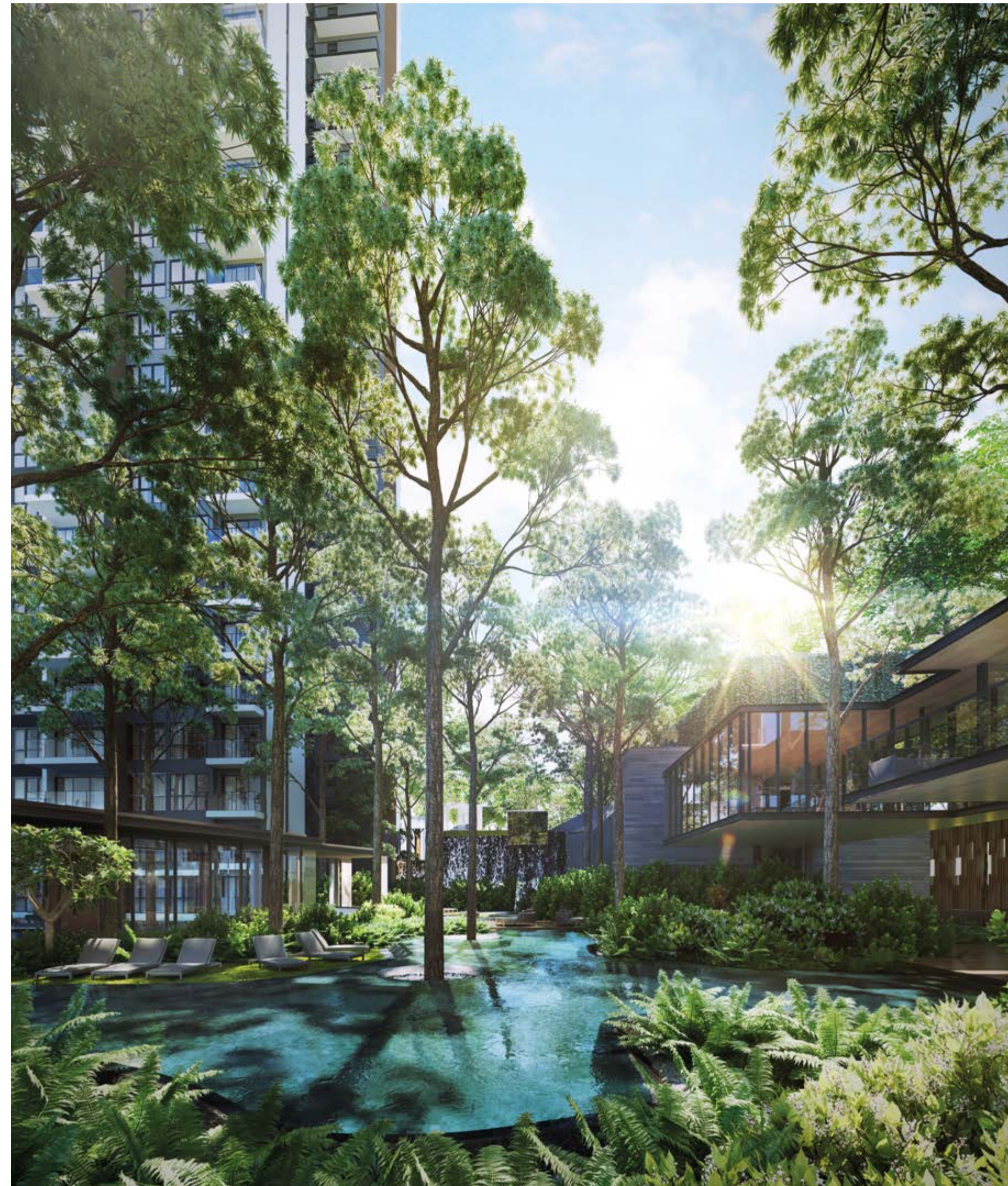
---

## **A Collaboration Between Internationally Recognised Design Professionals**

---

One Bishopsgate Plaza is the first tower development in the City that harmoniously fuses private apartments with a luxury hotel.

Behind it is a team of established designers and architects masterminded by respected developer UOL Group Limited. Between them they have created some of the most iconic residences, hotels and resorts in London and across the world.



DEDICATED TO CREATING A  
MASTERPIECE<sup>®</sup>

UOL Group Limited is one of Singapore's leading public-listed property companies with an extensive portfolio of development and investment properties, hotels and serviced suites.

UOL strongly believes in delivering product excellence and quality service in all our business ventures. Our list of property development projects includes residential units, office towers and shopping malls, hotels and serviced suites. UOL, through our hotel subsidiary Pan Pacific Hotels Group Limited (PPHG), owns and/or manages over 30 hotels, resorts and serviced suites in Asia, Oceania and North America under two acclaimed brands, namely 'Pan Pacific' and PARKROYAL.

Our unwavering commitment to architectural and quality excellence is reflected in all our developments, winning us prestigious awards such as the FIABC Prix d'Excellence Award, Aga Khan Award for Architecture, Urban Land Institute Awards for Excellence and President's Design Award.

As we stay true to our core values, building on Passion, Innovation, Enterprise, Corporate Social Responsibility and People, we continue to leverage our strengths to create long-term value for our stakeholders.





---

Pan Pacific Hotels Group is a wholly-owned hotel subsidiary of Singapore-listed UOL Group Limited, one of Asia's most established hospitality and property companies with an outstanding portfolio of investment and development properties.

Voted 'Best Regional Hotel Chain' by readers in Asia in 2017 and 2018, Pan Pacific Hotels Group comprises two acclaimed brands: its signature brand, Pan Pacific and its deluxe brand, PARKROYAL.

Sincerity is the hallmark of Pan Pacific Hotels Group. The Group is known to its guests, partners, associates and owners for its sincerity in people and the sense of confidence which alleviates the stresses of today's complex world.



---

Pan Pacific Hotels and Resorts is your safe harbour in the ever-changing world. Their footprint stretches across 25 choiced hotels, resorts and serviced suites in Asia, Oceania, North America and Europe, providing dependable places to live, work and play by integrating warm people, thoughtful processes, intuitive design, and integrity throughout.

[www.panpacific.com](http://www.panpacific.com)



**Crafted by  
PLP Architecture**

PLP Architecture is a London-based group of architects, designers and thinkers who value the transformative role of ideas and the capacity for architecture to inspire. The practice draws from a rich history and experience of working together on projects around the world, while maintaining the culture and energy of a young start-up.



**Curated by  
Yabu Pushelberg**

Founded in 1980 by George Yabu and Glenn Pushelberg, Yabu Pushelberg is now one of the most recognised design firms worldwide. It has studios in New York and Toronto and current projects in more than 16 countries. In 2013, George and Glenn were appointed Officers for the Order of Canada and recently included in the Wallpaper\* Power 200 list and the Business of Fashion BoF 500 list – an index of people shaping the global fashion industry.



**Considered by  
MSMR Architects**

A leading residential architectural practice, MSMR has a portfolio of high-end, central London residential architecture and interior projects. Their focus is on super-prime, boutique projects, from listed, period building redevelopments in Knightsbridge and Kensington to new build projects such as Burlington Gate in Mayfair.



**Managed by  
Stanhope**

Stanhope is a respected developer with over 30 years' experience and over £22bn of completed projects to their credit; including such London landmarks as Television Centre, Tate Modern, Broadgate and Paternoster Square. At One Bishopsgate Plaza, Stanhope bring their wealth of experience in London to manage the development on behalf of UOL Group Limited.



# ONE BISHOPSGATE PLAZA

**+44 (0)20 3515 0900**

**[www.onebgp.com](http://www.onebgp.com)**



All computer-generated images (CGIs) and photography images are indicative only.

Additional and à la carte services listed within these brochures may come at an additional cost and require pre-booking through the concierge. All services may be varied at any time.

UOL Group Limited for itself and its subsidiaries, its officers and employees (collectively, 'UOL') and its appointed agents exclude liability for all losses arising out of, or in connection with, these particulars to the maximum extent permitted by law and hereby give notice that:

1. These particulars have been prepared in good faith and with all due care and are believed to be correct at the time of publication. However, they were prepared from preliminary plans and specifications before the completion of the properties and are intended only as a guide for the marketing of One Bishopsgate Plaza. As such, prospective purchasers should not rely on this information and should ensure that their solicitor and professional advisors check the plans and specification attached to their contract.
2. These particulars do not constitute the whole or any part of any offer or contract and must not be relied upon as statements or representations of fact; all statements, representations, warranties, undertakings or promises, whether express or implied, are excluded to the maximum extent permitted by law.
3. All plans and images contained in this brochure are indicative only and must not be relied upon as a true or accurate depiction of the relevant scene or area. Specifications, including measurements, dimensions, sizes and distances are approximate only and subject to change at any time without notice.
4. The accuracy of any descriptions, including references to condition, in these particulars are not guaranteed; prospective purchasers must satisfy themselves as to their accuracy.
5. Branded products, goods or services referred to within these particulars are not guaranteed; alternatives of a comparable quality may be provided.
6. It should not be assumed that the property has all the necessary planning, building regulation or other consents and neither UOL nor its appointed agents have tested any services, equipment or facilities. Purchasers must satisfy themselves by inspection or otherwise.

September 2021

